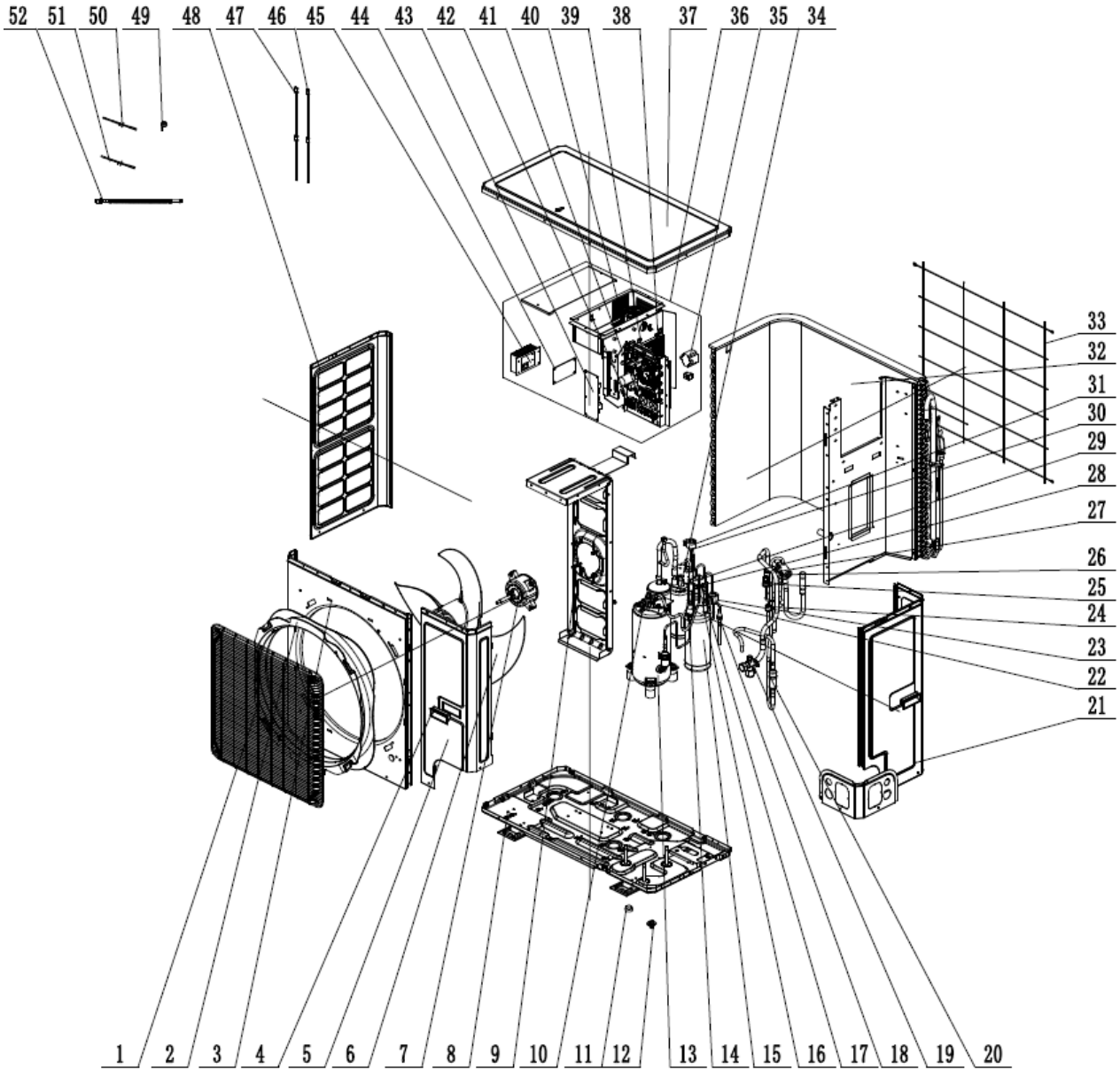


ENVBR36J10A

EXPLODED VIEW



ENVBR36J10A

NO.	Part Description	Qty	Part Code
1	Front Grill	1	0157280000301
2	Diversion Circle	1	10474100003
3	Cabinet	1	012022000003P03
4	Handle	2	2690410001603
5	Front Side Plate	1	012050000007P03
6	Axial Flow Fan	1	1043410000801
7	DC Fan Motor	1	150104060013
8	Chassis Sub-Assy	1	01700006008907P
9	Motor Support Sub-Assy	1	01701206003901
10	Cut off Valve -3/8	1	071302391
11	Drainage hole Cap	3	76715005
12	Drainage Joint (Drain Hose Adapter)	1	26113009
13	Compressor and Fittings	1	009001060125
14	Filter Strainer (Liquid Line Cut-Off Valve)	2	0721004501
15	Accumulator	1	035029000003
Not Shown	Electromagnetic Valve Sub-assy		030025060094
16	Electromagnetic Valve	1	43003091
17	Magnet Coil (Electromagnetic Valve)	1	4304000467
18	Filter Strainer (Compressor Suction)	1	0721304401
19	Cut off Valve -3/4	1	07330000001
20	Silencer	1	07245012
21	Rear Side Plate	1	012076000021P03
22	Electronic Expansion Valve	1	43005017
23	Electric Expand Valve Fitting	1	4300034404
24	Hi-Pressure Protect Switch 4.6/3.8MPa	1	4602000603
25	Hi-Pressure Sensor	1	43004400001501
26	4-way Valve	1	4300008201
27	Filter Strainer (Accumulator Suction)	1	07224803
28	Filter Strainer(Electromagnetic Valve)	2	07216221
29	One Way Valve	1	07133618
30	Electronic Expansion Valve	1	43005017
31	Electric Expansion Valve Coil	1	43000344
32	Condenser Assy	1	01100206019001
33	Rear Grill	1	0157410001402
34	Gas-liquid Separator	1	07223048
35	Inductance	1	43128000014

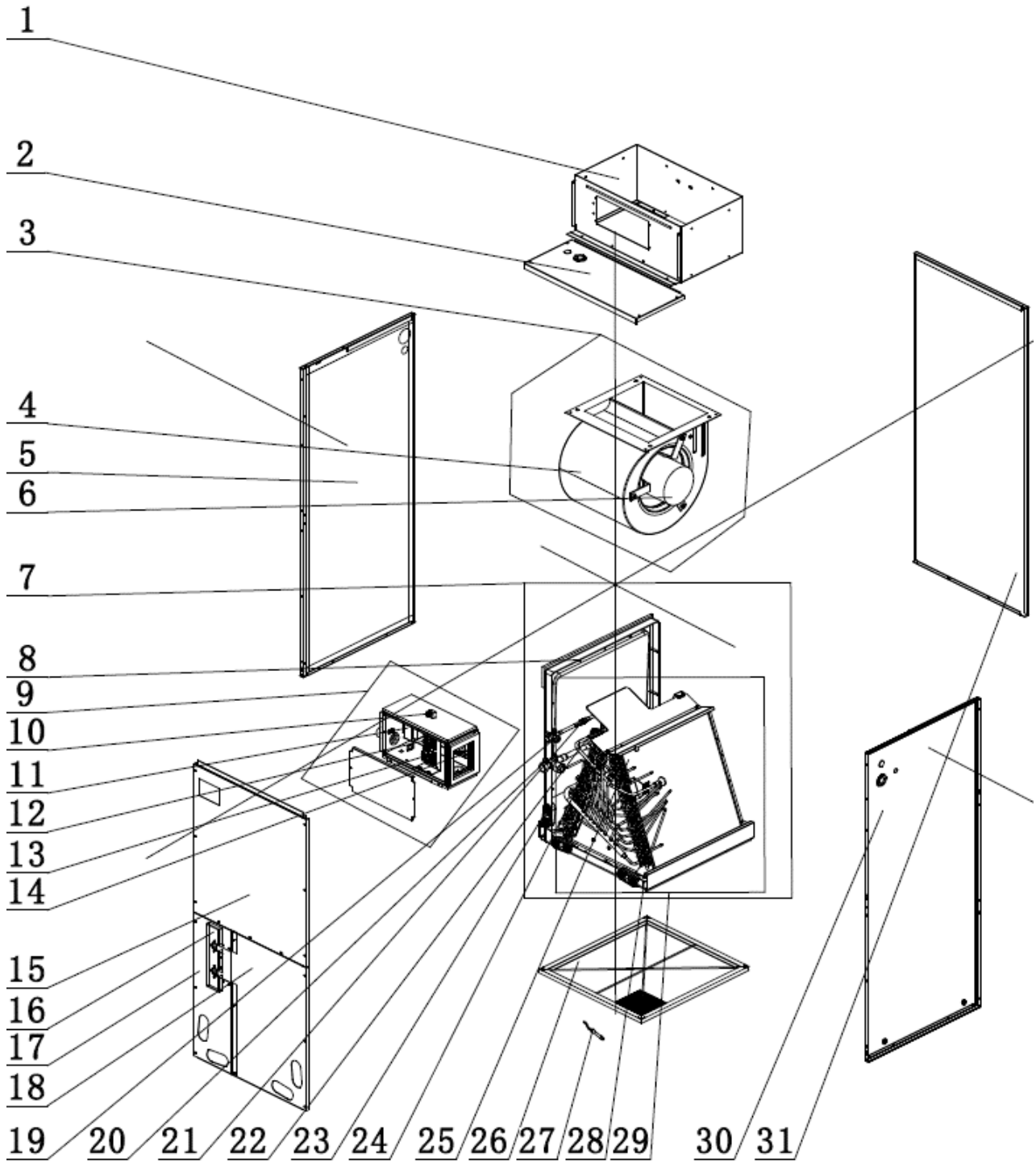
ENVBR36J10A

36	Electric Box Assy	1	100002065509
37	Coping	1	01264100052P03
38	Main Board2	1	300027060524
39	Main Board	1	300027060636
40	PFC Inductance	1	43120011
41	Terminal Board (6 Post)	1	4201025502
42	Terminal Board (3 Post)	1	422000000015
43	Filter Board	1	300020060028
44	Power Switch	1	300012060016
45	Radiator	1	430034000048
46	Electrical Heater (Chassis)	1	7651000413
47	Electrical Heater(Compressor)	1	7651521238
48	Left Side Plate	1	012055000007P03
49	4 Way Valve Coil	1	4300040094
50	Temperature Sensor (4-Way Valve)	1	3900007201
51	Temperature Sensor(Discharge, Coil, & Ambient)	1	39008000049G
52	Corrugated Pipe (Optional)	0	none

ASSEMBLIES

Not Shown	Electromagnetic Valve Sub-assy		030025060094
22	Electromagnetic Valve	1	43003091
23	Magnet Coil (electromagnetic valve)	1	4304000467
Not Shown	4-way Valve Assy	1	030152060295
26	4-way Valve	1	4300008201
49	4 Way Valve Coil	1	4300040094

ENVBR24HPJ1IB
ENVBR36HPJ1IB
EXPLODED VIEW



ENVBR24HPJ1IB ENVBR36HPJ1IB

NO.	Part Description	Qty	Part Code
1	Side Plate	1	012010060972
2	Top Cover Sub-Assy	1	000051060106
3	Centrifugal fan assy	1	000052060415
4	Centrifugal Fan Housing	1	1570220201
5	Brushless DC Motor	1	15010400001401
6	Left Side Plate Sub-Assy	1	01312200015
7	Water Tray Assy	1	000069060335
8	Water Tray	1	2690220501
9	Electric Box Assy	1	100002070100
10	Terminal Board (1 Post)	1	42011147
11	Transformer	1	43110286
12	Terminal Board (6 Post)	1	4201025503
13	Terminal Board (2 Post)	1	42000100000102
14	Main Board	1	300002061591
15	Top Cover Board Sub-assy	1	01262200019
16	Bottom Cover Plate Assy	1	000133060017
17	Bottom Cover Plate Assy	1	000133060018
18	Bottom Cover Plate 2	1	01262200017
19	Cut off Valve -3/8	1	071302391
20	Thermal Expansion Valve	1	071017060022
21	Cut off Valve -3/4	1	070001000009
22	Filter Strainer (Liquid Line)	2	0721200102
23	Choke Plug	8	76718209
24	Evaporator assembly (left)	1	010001060291
25	Evaporator assembly (right)	1	010001060292
26	Air Filter Sub-Assy	1	111001060160
27	Temperature Sensor	1	390001923
28	Evaporator Assy Parts	1	011001061481
29	Water Tray	1	2690220401
30	Right Side Plate	1	012056060205P
31	Rear Side Plate Sub-Assy	1	01312200019

ASSEMBLIES

3	Centrifugal fan assy	1	000052060415
4	Centrifugal Fan Housing	1	1570220201
5	Brushless DC Motor	1	15010400001401